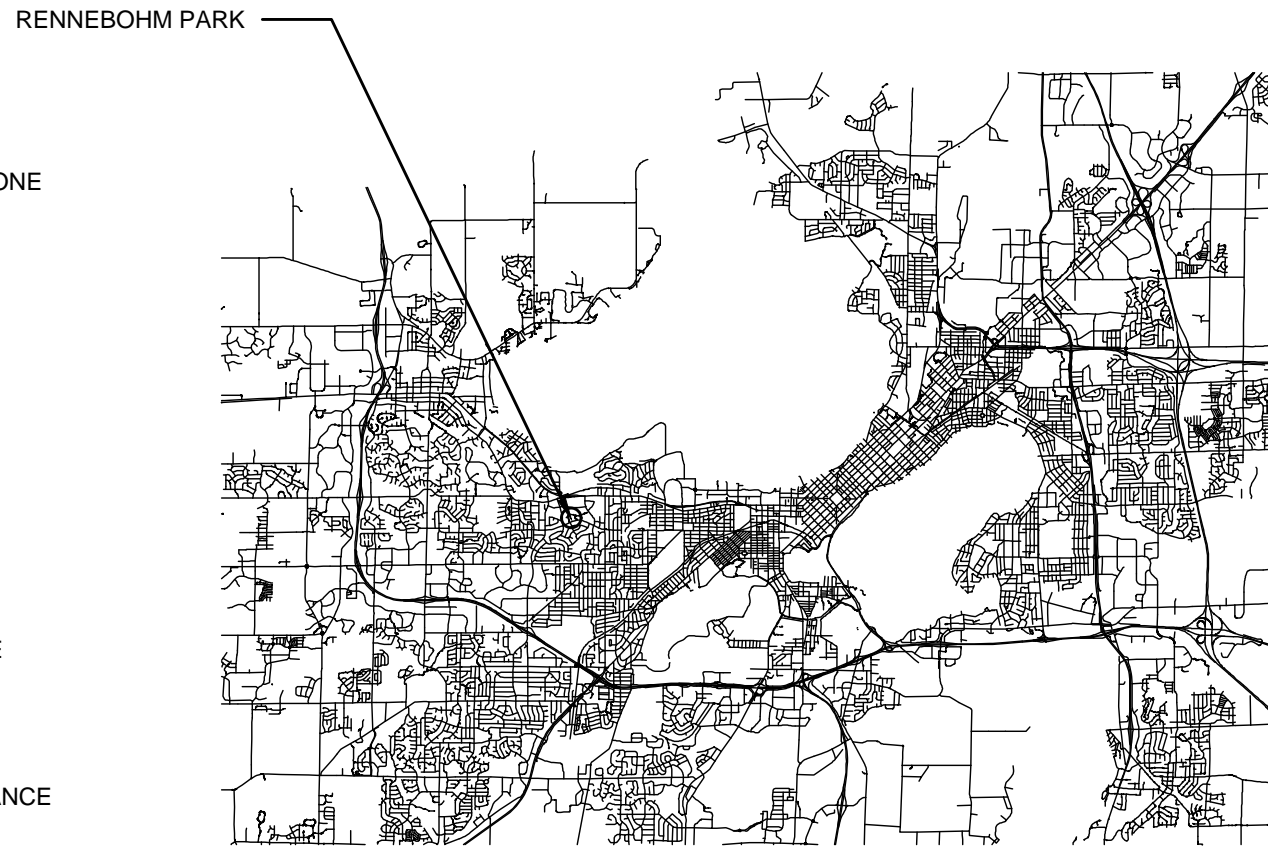


**LEGEND**

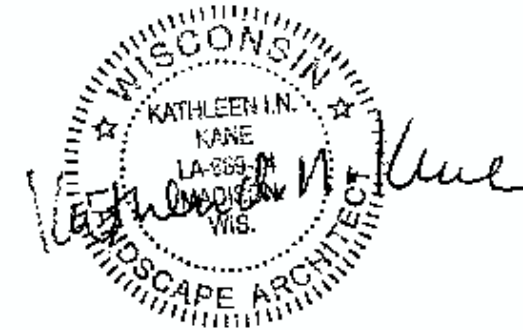
- EX. ELECTRICAL HAND HOLE
- ⊗ EX. ELECTRICAL PEDESTAL
- EX. TELEPHONE PEDESTAL
- ⊗ EX. TREE
- ⊗ EX. WATER HYDRANT
- EX. WATER VALVE
- — — — — EX. PROPERTY LINE
- - - - - EX. EASEMENT
- x - - - - - EX. FENCE LINE
- ~ ~ ~ ~ ~ EX. TREE LINE
- - - - - EX. CONTOUR (INDEX)
- - - - - EX. CONTOUR (INTER)
- • • • • EX. ABANDONED UTILITY
- E — EX. ELECTRIC
- FO — EX. FIBER OPTIC
- G — EX. NATURAL GAS
- OH — EX. OVERHEAD LINE
- SN — EX. SANITARY SEWER
- ST — EX. STORM SEWER
- TV — EX. CABLE TV
- T — EX. UNDERGROUND TELEPHONE
- W — EX. WATER LINE
- [Pattern] EX. GRAVEL
- [Pattern] EX. CONCRETE

- ### ⊗ PRO. SPOT ELEVATION
- - - - - PRO. CONTOUR (INDEX)
- - - - - PRO. CONTOUR (INTER)
- x - - - - - PRO. FENCE
- - - - - PRO. GRADING LIMITS
- — — — — — PRO. SILT SOCK
- — — — — — PRO. CONSTRUCTION FENCE
- ST — PRO. STORM SEWER
- [Pattern] PRO. ASPHALT
- [Pattern] PRO. CONCRETE
- [Pattern] PRO. CONSTRUCTION ENTRANCE
- [Pattern] REMOVE EX. TOPSOIL

# 2023 RENNEBOHM PARK INCLUSIVE PLAYGROUND CONTRACT 9279 MUNIS NO. 13934-51-130



DESIGNED BY:



City of Madison  
Department of Public Works  
**PARKS DIVISION**  
City-County Building, Suite 104  
210 Martin Luther King, Jr. Blvd.  
Madison, WI 53703



PROJECT:

## SHEET SCHEDULE

1 RENNEBOHM PARK	
1.1	PROJECT LOCATION AND SITE ACCESS
1.2	EXISTING CONDITIONS
1.3	DEMOLITION AND SITE PLAN
1.4	EQUIPMENT LAYOUT PLAN
1.5	SITE PLAN
1.6	GRADING AND EROSION CONTROL PLAN
1.7	DESIGN COMPUTATIONS
2 DETAILS	
2.1	POURED-IN-PLACE PLAYGROUND SURFACING
2.2	ORNAMENTAL FENCE

*Although every effort has been made in preparing these plans and checking them for accuracy, the contractor and subcontractors must check all details and dimensions of their trade and be responsible for the same.*

ITEM	DATE
ADVERTISED TO BID: KK	2022-02-09

PUBLIC WORKS PROJECT #:  
**9279**

SHEET TITLE:  
**COVER SHEET**

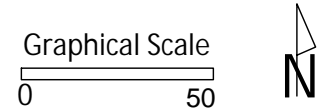
SHEET NUMBER:





City of Madison  
 Department of Public Works  
**PARKS DIVISION**  
 City-County Building, Suite 104  
 210 Martin Luther King, Jr. Blvd.  
 Madison, WI 53703

*play*  
**MADISON  
 PARKS**



PROJECT:  
**2023 RENNEBOHM  
 PARK INCLUSIVE  
 PLAYGROUND**

PROJECT ADDRESS:  
**RENNEBOHM PARK  
 115 N EAU CLAIRE AVE  
 MADISON, WI 53705**

Although every effort has been made in preparing these plans and checking them for accuracy, the contractor and subcontractors must check all details and dimensions of their trade and be responsible for the same.

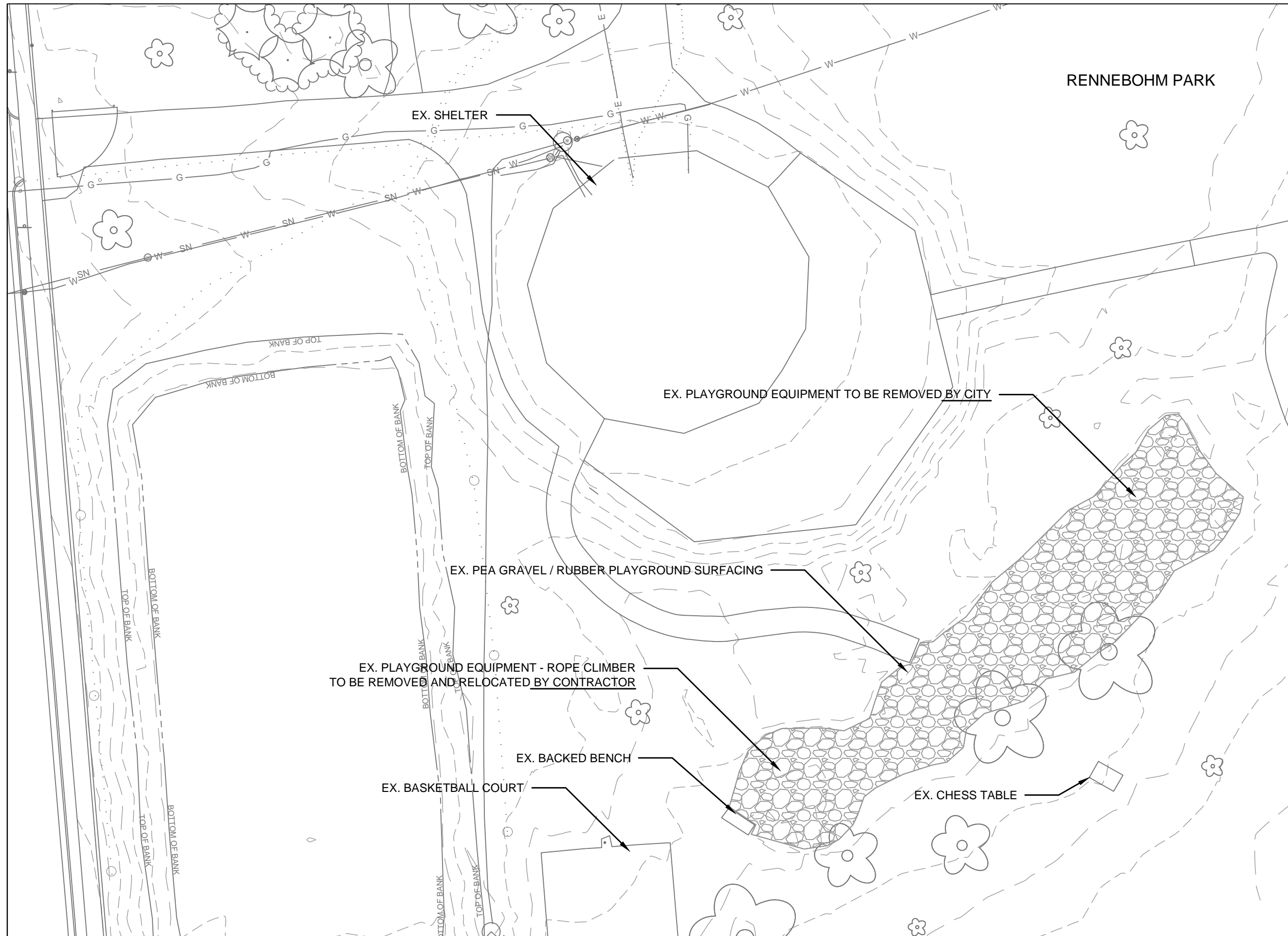
ITEM	DATE
ADVERTISED TO BID: KK	2023-02-09

PUBLIC WORKS PROJECT #:  
**9279**

SHEET TITLE:  
**PROJECT LOCATION  
 AND SITE ACCESS**

SHEET NUMBER:  
**1.1**





City of Madison  
 Department of Public Works  
**PARKS DIVISION**  
 City-County Building, Suite 104  
 210 Martin Luther King, Jr. Blvd.  
 Madison, WI 53703

**play**  
**MADISON**  
**PARKS**

Graphical Scale

0 30



PROJECT:

**2023 RENNEBOHM  
 PARK INCLUSIVE  
 PLAYGROUND**

PROJECT ADDRESS:

**RENNEBOHM PARK  
 115 N EAU CLAIRE AVE  
 MADISON, WI 53705**

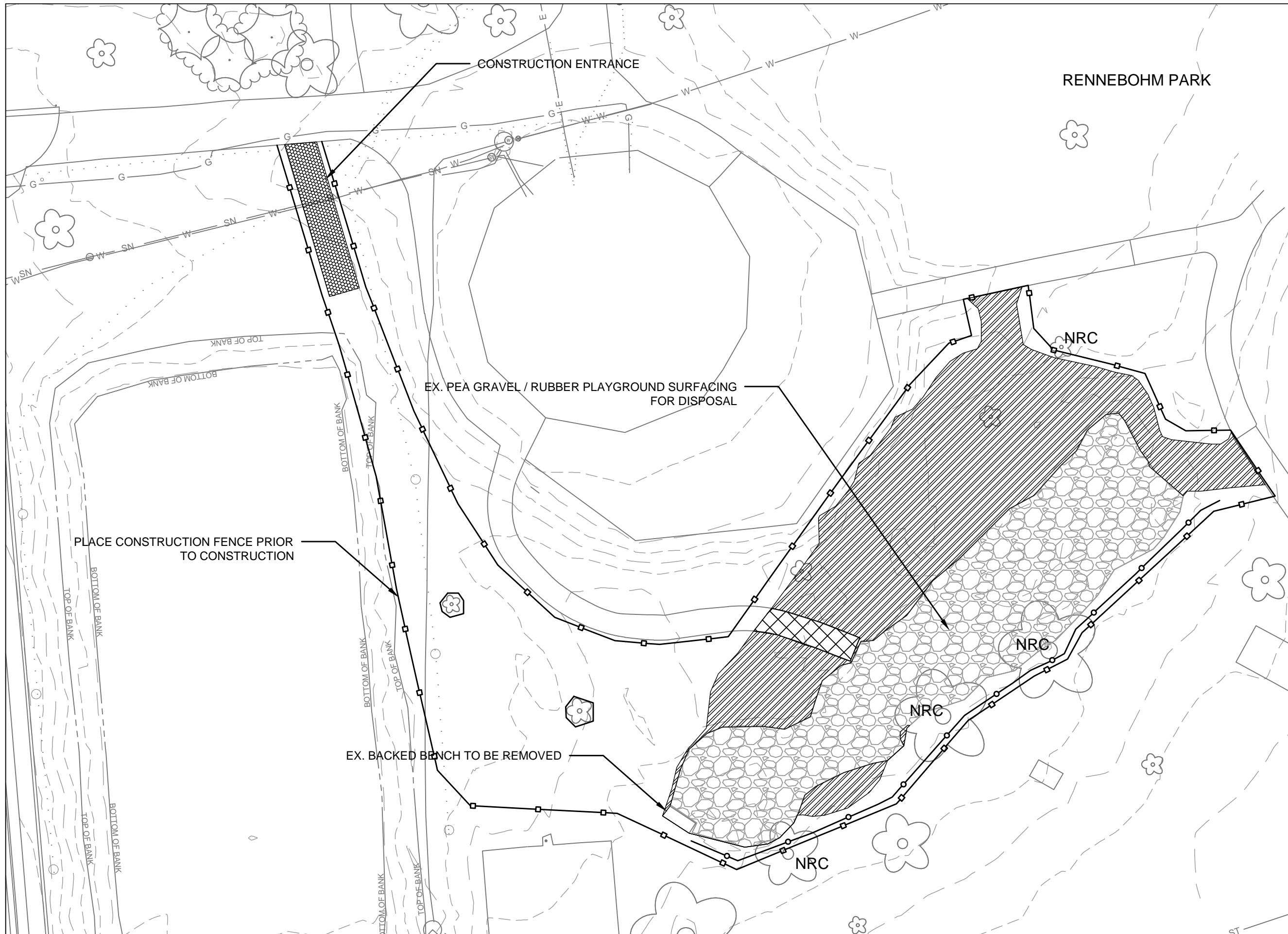
Although every effort has been made in preparing these plans and checking them for accuracy, the contractor and subcontractors must check all details and dimensions of their trade and be responsible for the same.

ITEM	DATE
ADVERTISED TO BID: KK	2023-02-09

PUBLIC WORKS PROJECT #:  
**9279**

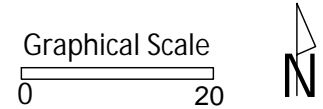
SHEET TITLE:  
**EXISTING CONDITIONS**

SHEET NUMBER:  
**1.2**



City of Madison  
 Department of Public Works  
**PARKS DIVISION**  
 City-County Building, Suite 104  
 210 Martin Luther King, Jr. Blvd.  
 Madison, WI 53703

*play*  
**MADISON  
 PARKS**



PROJECT:  
*2023 RENNEBOHM  
 PARK INCLUSIVE  
 PLAYGROUND*

PROJECT ADDRESS:  
*RENNEBOHM PARK  
 115 N EAU CLAIRE AVE  
 MADISON, WI 53705*

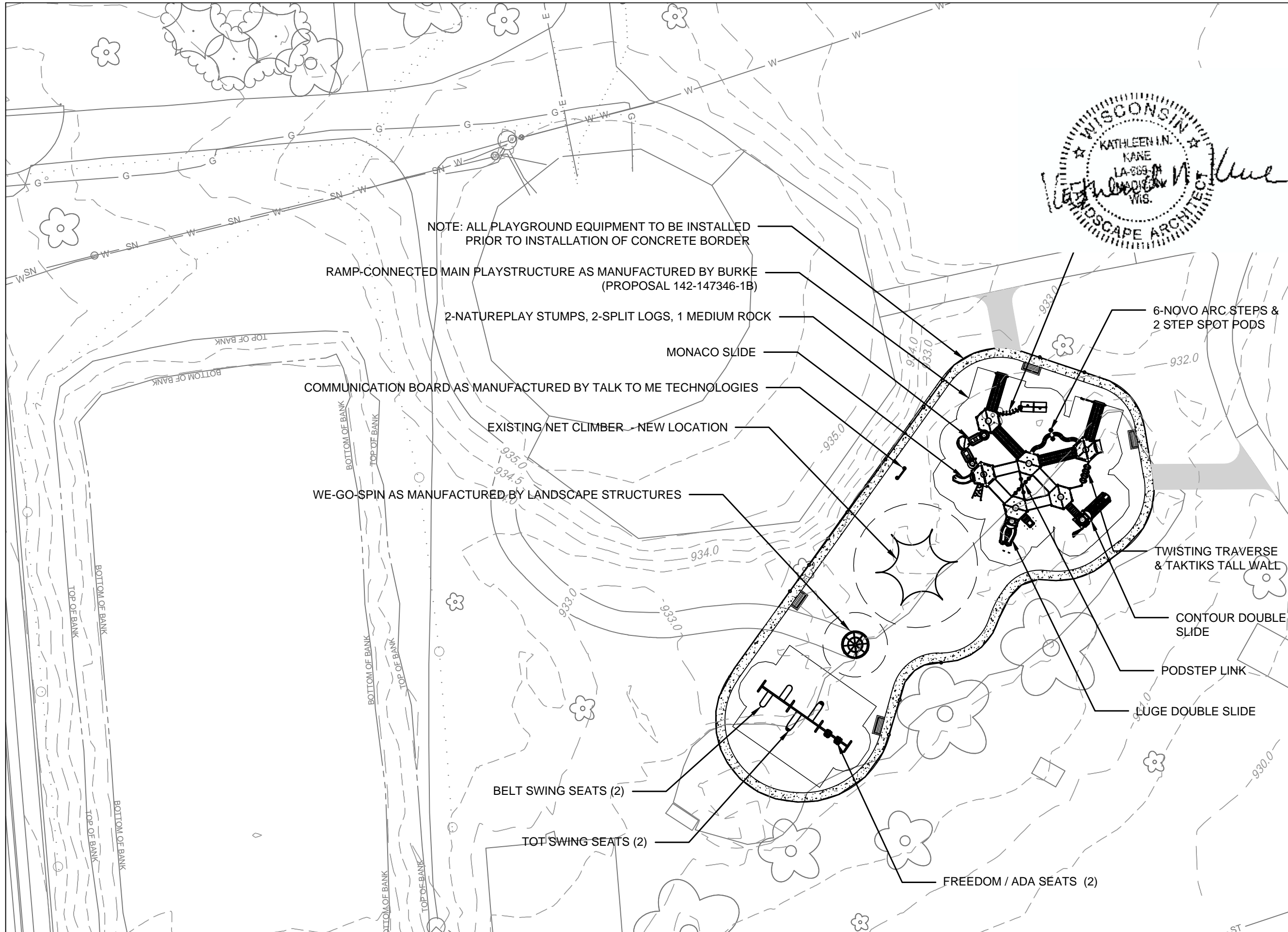
Although every effort has been made in preparing these plans and checking them for accuracy, the contractor and subcontractors must check all details and dimensions of their trade and be responsible for the same.

ITEM	DATE
ADVERTISED TO BID: KK	2023-02-09

PUBLIC WORKS PROJECT #:  
*9279*

SHEET TITLE:  
***DEMOLITION AND  
 PROTECTION PLAN***

SHEET NUMBER:  
***1.3***



NOTE: ALL PLAYGROUND EQUIPMENT TO BE INSTALLED PRIOR TO INSTALLATION OF CONCRETE BORDER

RAMP-CONNECTED MAIN PLAYSTRUCTURE AS MANUFACTURED BY BURKE (PROPOSAL 142-147346-1B)

2-NATUREPLAY STUMPS, 2-SPLIT LOGS, 1 MEDIUM ROCK

MONACO SLIDE

COMMUNICATION BOARD AS MANUFACTURED BY TALK TO ME TECHNOLOGIES

EXISTING NET CLIMBER - NEW LOCATION

WE-GO-SPIN AS MANUFACTURED BY LANDSCAPE STRUCTURES

BELT SWING SEATS (2)

TOT SWING SEATS (2)

FREEDOM / ADA SEATS (2)

6-NOVO ARC STEPS & 2 STEP SPOT PODS

TWISTING TRAVERSE & TAKTIKS TALL WALL

CONTOUR DOUBLE SLIDE

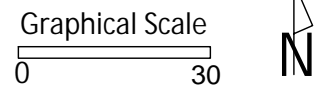
PODSTEP LINK

LUGE DOUBLE SLIDE



City of Madison  
 Department of Public Works  
**PARKS DIVISION**  
 City-County Building, Suite 104  
 210 Martin Luther King, Jr. Blvd.  
 Madison, WI 53703

**play**  
**MADISON**  
**PARKS**



PROJECT:  
**2023 RENNEBOHM PARK INCLUSIVE PLAYGROUND**

PROJECT ADDRESS:  
**RENNEBOHM PARK  
 115 N EAU CLAIRE AVE  
 MADISON, WI 53705**

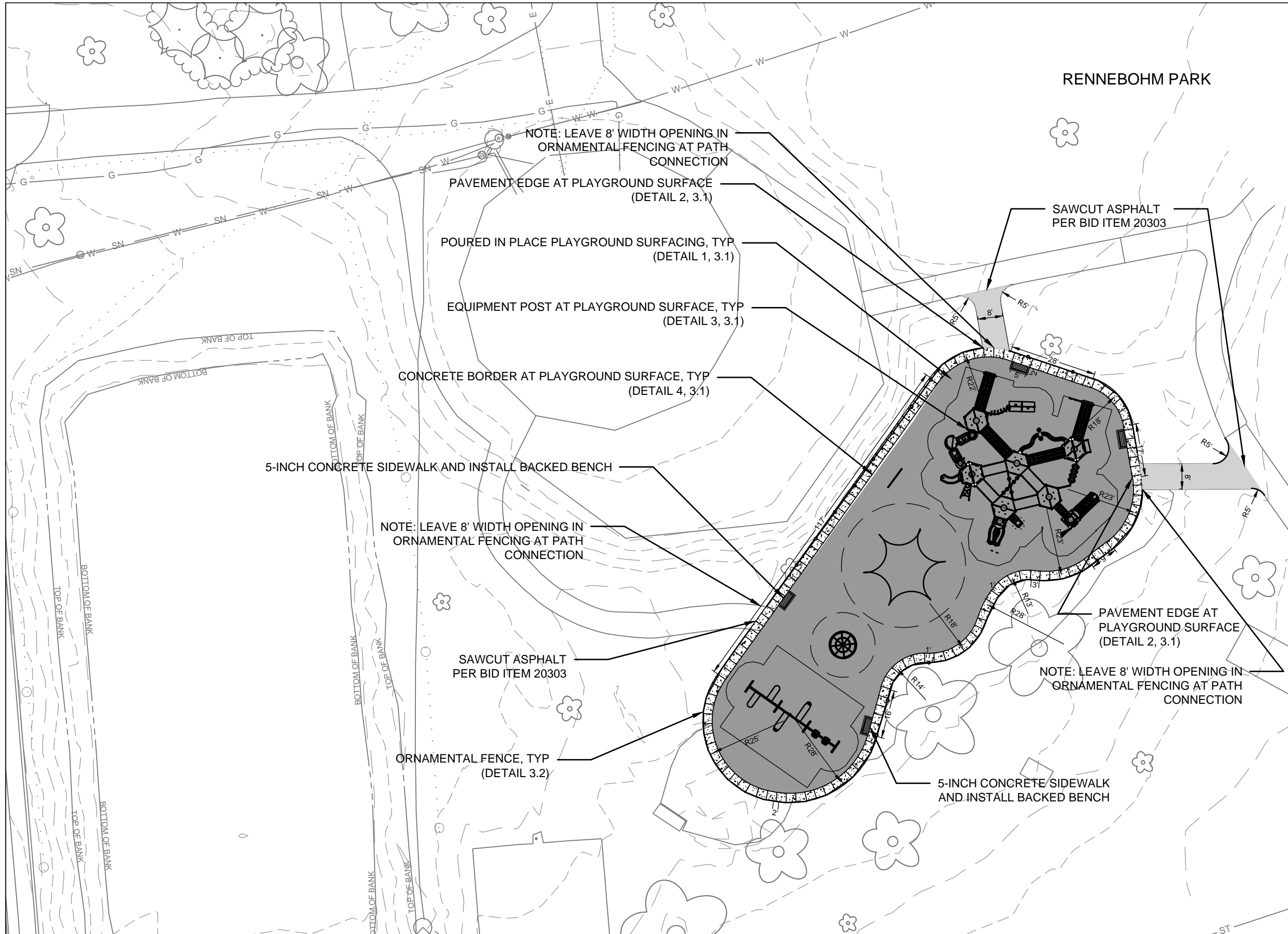
Although every effort has been made in preparing these plans and checking them for accuracy, the contractor and subcontractors must check all details and dimensions of their trade and be responsible for the same.

ITEM	DATE
ADVERTISED TO BID: KK	2023-02-09

PUBLIC WORKS PROJECT #:  
**9279**

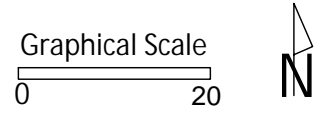
SHEET TITLE:  
**EQUIPMENT LAYOUT PLAN**

SHEET NUMBER:  
**1.4**



City of Madison  
 Department of Public Works  
**PARKS DIVISION**  
 City-County Building, Suite 104  
 210 Martin Luther King, Jr. Blvd.  
 Madison, WI 53703

**play**  
**MADISON**  
**PARKS**



PROJECT:  
**2023 RENNEBOHM  
 PARK INCLUSIVE  
 PLAYGROUND**

PROJECT ADDRESS:  
**RENNEBOHM PARK  
 115 N EAU CLAIRE AVE  
 MADISON, WI 53705**

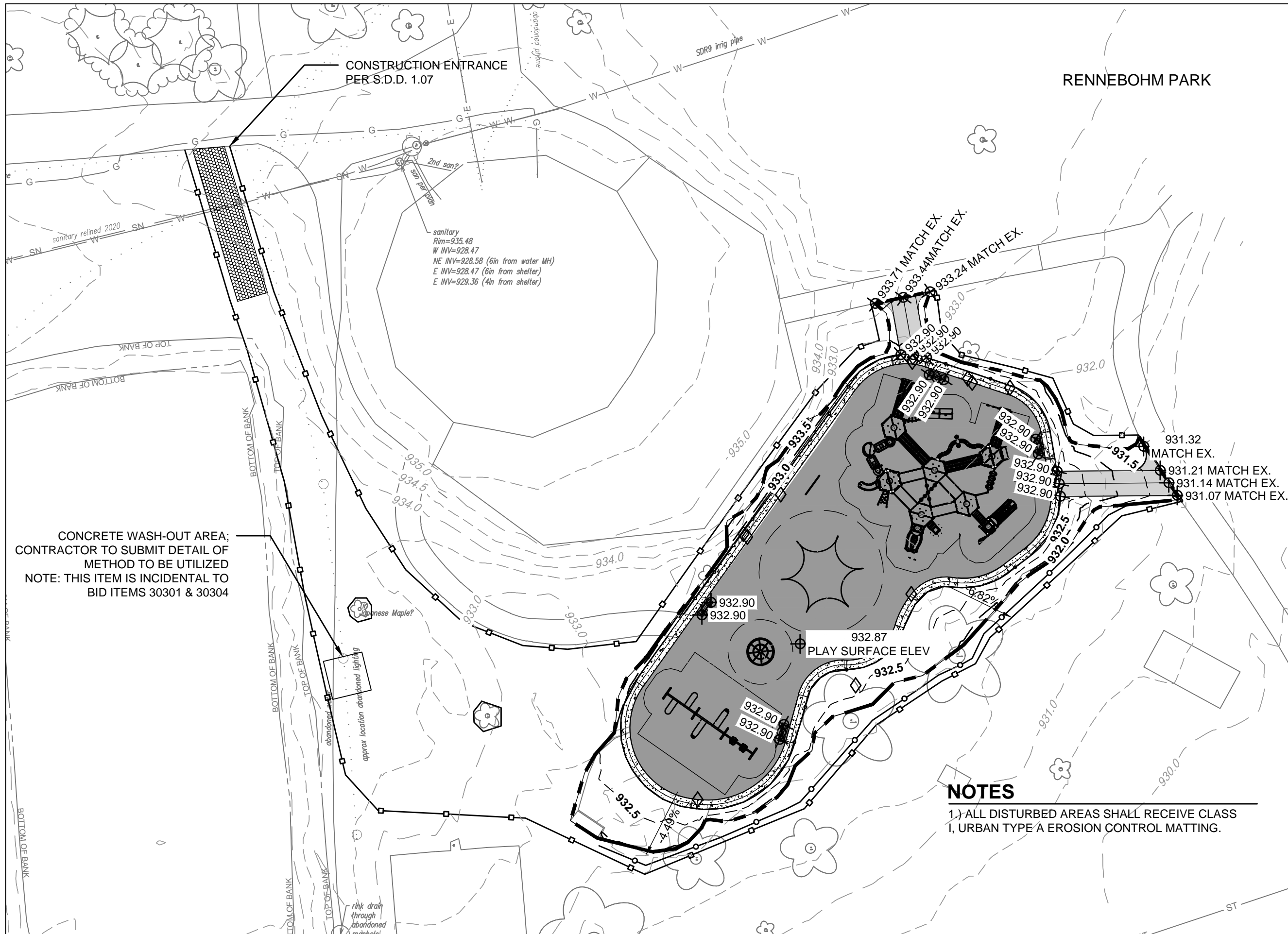
Although every effort has been made in preparing these plans and checking them for accuracy, the contractor and subcontractors must check all details and dimensions of their trade and be responsible for the same.

ITEM	DATE
ADVERTISED TO BID: KK	2023-02-09

PUBLIC WORKS PROJECT #:  
**9279**

SHEET TITLE:  
**SITE PLAN**

SHEET NUMBER:  
**1.5**

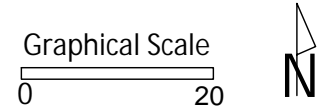


CONCRETE WASH-OUT AREA;  
 CONTRACTOR TO SUBMIT DETAIL OF  
 METHOD TO BE UTILIZED  
 NOTE: THIS ITEM IS INCIDENTAL TO  
 BID ITEMS 30301 & 30304

**NOTES**

- 1.) ALL DISTURBED AREAS SHALL RECEIVE CLASS I, URBAN TYPE A EROSION CONTROL MATTING.

City of Madison  
 Department of Public Works  
**PARKS DIVISION**  
 City-County Building, Suite 104  
 210 Martin Luther King, Jr. Blvd.  
 Madison, WI 53703



PROJECT:  
**2023 RENNEBOHM  
 PARK INCLUSIVE  
 PLAYGROUND**

PROJECT ADDRESS:  
**RENNEBOHM PARK  
 115 N EAU CLAIRE AVE  
 MADISON, WI 53705**

Although every effort has been made in preparing these plans and checking them for accuracy, the contractor and subcontractors must check all details and dimensions of their trade and be responsible for the same.

ITEM	DATE
ADVERTISED TO BID: KK	2023-02-09

PUBLIC WORKS PROJECT #:  
**9279**

SHEET TITLE:  
**GRADING AND  
 EROSION CONTROL  
 PLAN**

SHEET NUMBER:  
**1.6**



**Rennebohm Park Inclusive Playground - Earthwork Quantities**

City of Madison, WI Public Works Contract 9279  
Date Revised: 1/25/2023

**Notes:**  
Positive volumes are cuts, negative volumes are fills.  
Not all parts of all surface models (Digital Terrain Models) are used for computations or intended for actual construction.

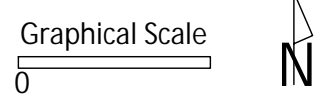
Existing Renbm\_Sur2021-08-27\_Comb  
Proposed 2022 Rennebohm Inclusive PG Volume.dwg

Grp	Material	Item	From Surface Model	To Surface Model	area (sq ft)	depth (ft)	Unfactored volume (cu ft)	Unfactored volume (cu yd)	Expansion Factor (%)	Factored (Uncompacted) Volume (cu yd)
Asphalt to Concrete	Asphalt Excavate	Remove estimated 3in asphalt	n/a	n/a	28	0.25	7	0.2	0%	0.2
Asphalt to Concrete	Gravel (Clean) Excavate	Remove estimated 4in clean gravel base	n/a	n/a	28	0.33	9	0.3	0%	0.3
Asphalt to Concrete	Subsoil Excavate	Cut subsoil to proposed subgrade	Ex-8in	Pro-11in	28	varies	9	0.3	0%	0.3
Asphalt to Concrete	Subsoil Place	Fill subsoil to proposed subgrade	Ex-8in	Pro-11in	28	varies	0	0.0	0%	0.0
Asphalt to Concrete	Gravel (for Pavement) Place	Place 6in gravel base out to 6in from pavement edge	n/a	n/a	28	-0.50	-13	-0.5	0%	-0.5
Asphalt to Concrete	Concrete Place	Place 5in concrete	n/a	n/a	28	-0.42	-11	-0.4	0%	-0.4
Asphalt to Playsurface	Asphalt Excavate	Remove estimated 3in asphalt	n/a	n/a	164	0.25	41	1.5	0%	1.5
Asphalt to Playsurface	Gravel (Clean) Excavate	Remove estimated 4in clean gravel base	n/a	n/a	164	0.33	55	2.0	0%	2.0
Asphalt to Playsurface	Gravel (Dirty) Excavate	Remove estimated 2in mixed gravel/subsoil	n/a	n/a	164	0.17	27	1.0	0%	1.0
Asphalt to Playsurface	Subsoil Excavate	Cut subsoil to proposed subgrade	Ex-8in	Pro-8in	164	varies	5	0.2	0%	0.2
Asphalt to Playsurface	Subsoil Place	Fill subsoil to proposed subgrade	Ex-8in	Pro-8in	164	varies	-12	-0.5	0%	-0.5
Asphalt to Playsurface	Gravel (for Playsurface) Place	Place 4in gravel base	n/a	n/a	164	-0.33	-54	-2.0	0%	-2.0
Asphalt to Playsurface	Playsurface Place	Place 4in PIP playsurface	n/a	n/a	164	-0.33	-55	-2.0	0%	-2.0
Grass to Asphalt	Topsoil Excavate	Strip 6in topsoil	n/a	n/a	483	0.50	231	8.6	0%	8.6
Grass to Asphalt	Subsoil Excavate	Cut subsoil to proposed subgrade	Ex-6in	Pro-12in	483	varies	118	4.3	0%	4.3
Grass to Asphalt	Subsoil Place	Fill subsoil to proposed subgrade	Ex-6in	Pro-12in	483	varies	-39	-1.5	0%	-1.5
Grass to Asphalt	Gravel (Path) Place	Place 6in gravel base, out to 6in from asphalt edge	n/a	n/a	483	-0.75	-347	-12.9	0%	-12.9
Grass to Asphalt	Asphalt Place	Place 3in asphalt	n/a	n/a	402	-0.25	-100	-3.7	0%	-3.7
Grass to Asphalt	Topsoil Place	Place 3in topsoil on 6in wide gravel edge	n/a	n/a	61	-0.25	-15	-0.6	0%	-0.6
Grass to Concrete	Topsoil Excavate	Strip 6in topsoil	n/a	n/a	708	0.50	353.90	13.1	0%	13.1
Grass to Concrete	Subsoil Excavate	Cut subsoil to proposed subgrade	Ex-6in	Pro-11in	708	varies	208.27	7.7	0%	7.7
Grass to Concrete	Subsoil Place	Fill subsoil to proposed subgrade	Ex-6in	Pro-11in	708	varies	-74.28	-2.8	0%	-2.8
Grass to Concrete	Gravel (for concrete edge) Place	Place 6in gravel base out to 6in from pavement edge	n/a	n/a	708	-0.50	-353.90	-13.1	0%	-13.1
Grass to Concrete	Concrete Place	Place 5in concrete	n/a	n/a	708	-0.42	-294.94	-10.9	0%	-10.9
Grass to Grass	Topsoil Excavate	Strip 6in topsoil	n/a	n/a	1130	0.50	564.89	20.9	0%	20.9
Grass to Grass	Subsoil Excavate	Cut subsoil to proposed subgrade	Ex-6in	Pro-6in	1130	varies	39.33	1.5	0%	1.5
Grass to Grass	Subsoil Place	Fill subsoil to proposed subgrade	Ex-6in	Pro-6in	1130	varies	-248.84	-9.2	0%	-9.2
Grass to Grass	Topsoil Place	Place 6in topsoil	n/a	n/a	1130	-0.50	-564.89	-20.9	0%	-20.9

Grass to Play Surface	Topsoil Excavate	Strip 6in topsoil	n/a	n/a	4817	0.50	2408	89.2	0%	89.2
Grass to Play Surface	Subsoil Excavate	Cut subsoil to proposed subgrade	Ex-6in	Pro-8in	4817	varies	335	12.4	0%	12.4
Grass to Play Surface	Subsoil Place	Fill subsoil to proposed subgrade	Ex-6in	Pro-8in						
Grass to Play Surface	Place 4in gravel	Place 4in gravel	n/a	n/a						
Grass to Play Surface	Play Surface Place	Place 4in PIP playsurface	n/a	n/a						
Play Surface to Asphalt	Play Surface Excavate	Remove existing play surface, estimated depth 17in	n/a	n/a						
Play Surface to Asphalt	Subsoil Excavate	Cut subsoil to proposed subgrade	Ex-6in	Pro-12in						
Play Surface to Asphalt	Subsoil Place	Fill subsoil to proposed subgrade	Ex-6in	Pro-12in						
Play Surface to Asphalt	Gravel (Path) Place	Place 3in gravel base, out to 6in from asphalt edge	n/a	n/a						
Play Surface to Asphalt	Asphalt Place	Place 3in asphalt	n/a	n/a						
Play Surface to Asphalt	Topsoil Place	Place 3in topsoil on 6in wide gravel edge	n/a	n/a	331	-0.25	-83	-0.3	0%	-0.3
Play Surface to Concrete	Play Surface Excavate	Remove existing play surface, estimated depth 17in	n/a	n/a	602	1.42	854.53	31.6	0%	31.6
Play Surface to Concrete	Subsoil Place	Cut subsoil to proposed subgrade	Ex-17in	Pro-11in	602	varies	0.00	0.0	0%	0.0
Play Surface to Concrete	Subsoil Excavate	Fill subsoil to proposed subgrade	Ex-17in	Pro-11in	602	varies	-651.30	-24.1	0%	-24.1
Play Surface to Concrete	Concrete Boarder Place (placeholder volume)	Place playground border timbers (placeholder volume to balance volume comps)	n/a	n/a	602	-1.00	-601.78	-22.3	0%	-22.3
Play Surface to Grass	Play Surface Excavate	Remove existing play surface, estimated depth 17in	n/a	n/a	2088	1.42	2957.31	109.5	0%	109.5
Play Surface to Grass	Subsoil Excavate	Cut subsoil to proposed subgrade	Ex-17in	Pro-6in	2088	varies	0.00	0.0	0%	0.0
Play Surface to Grass	Subsoil Place	Fill subsoil to proposed subgrade	Ex-17in	Pro-6in	2088	varies	-2727.22	-101.0	0%	-101.0
Play Surface to Grass	Topsoil Place	Place 6in topsoil	n/a	n/a	2088	-0.50	-1043.78	-38.7	0%	-38.7
Play Surface to Play Surface	Play Surface Excavate	Remove existing play surface, estimated depth 17in	n/a	n/a	3891	1.42	5241.33	194.1	0%	194.1
Play Surface to Play Surface	Subsoil Excavate	Cut subsoil to proposed subgrade	Ex-17in	Pro-8in	3891	varies	0.00	0.0	0%	0.0
Play Surface to Play Surface	Subsoil Place	Fill subsoil to proposed subgrade	Ex-17in	Pro-8in	3891	varies	-6820.18	-215.6	0%	-215.6
Gravel (for Play Surface) Place	Place 4in gravel	Place 4in gravel	n/a	n/a	3891	-0.33	-1218	-45.1	0%	-45.1
Play Surface to Play Surface	Play Surface Place	Place 4in PIP playsurface	n/a	n/a	3891	-0.33	-1218.06	-45.1	0%	-45.1



City of Madison  
Department of Public Works  
**PARKS DIVISION**  
City-County Building, Suite 104  
210 Martin Luther King, Jr. Blvd.  
Madison, WI 53703



PROJECT:  
**2023 RENNEBOHM PARK INCLUSIVE PLAYGROUND**

PROJECT ADDRESS:  
**RENNEBOHM PARK  
115 N EAU CLAIRE AVE  
MADISON, WI 53705**

*Although every effort has been made in preparing these plans and checking them for accuracy, the contractor and subcontractors must check all details and dimensions of their trade and be responsible for the same.*

ITEM DATE  
ADVERTISED TO BID: KK 2023-02-09

PUBLIC WORKS PROJECT #:  
**9279**

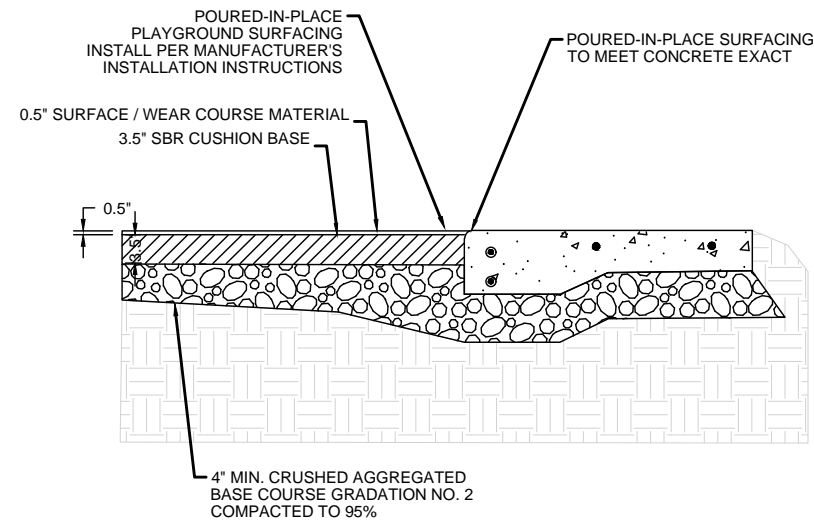
SHEET TITLE:  
**VOLUME COMPUTATIONS**

SHEET NUMBER:

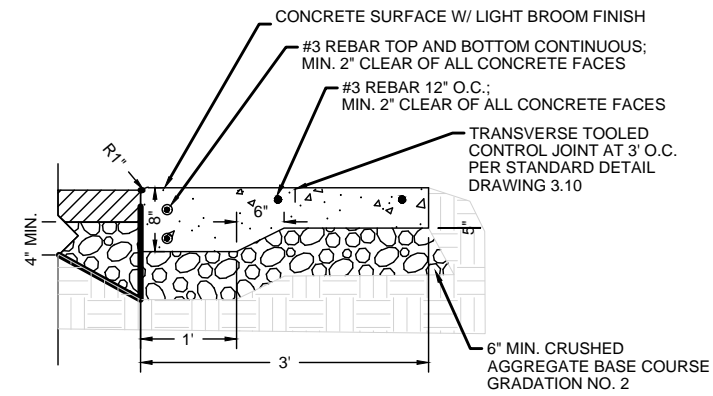
**1.7**

Bid Item	Quantity	Units	Relation to Table Above
20101 Excavation Cut	134	CY	= Subsoil Excavate + Topsoil Excavate
20103 Excavation Cut - Pea Gravel / Rubber Mix	339	CY	= Play Surface Excavate
20202 Fill Borrow	67	CY	= Subsoil Excavate + Subsoil Place
20221 Topsoil	362	SY	= (Topsoil Place) / -167
40102 Crushed Aggregate Base Course Gradation No. 2 & 3	282	tons	=(Gravel for Pavement Place + Gravel for Playsurface Place + Gravel for Concrete Edge Place) * -2 ton/cubic
40201 3" Depth HMA Pavement 4 LT58-28S	9.0	tons	= Asphalt Place * -2.16 ton/cubic yard
90002 Playground Surfacing - Poured-In-Place Rubber	109	CY	= Play Surface Place * -1.10

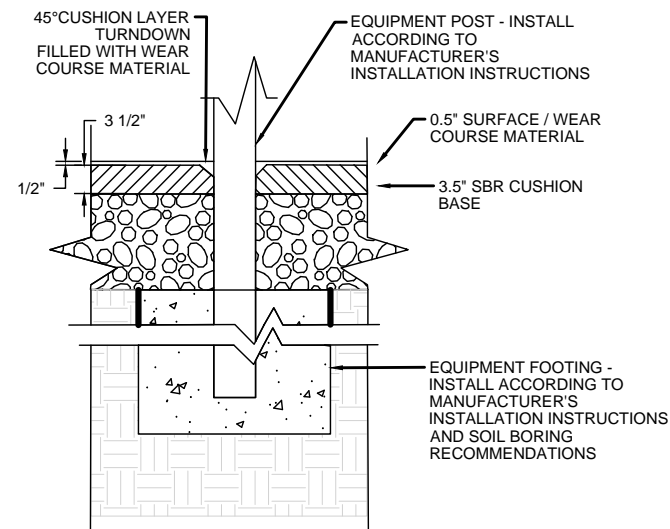




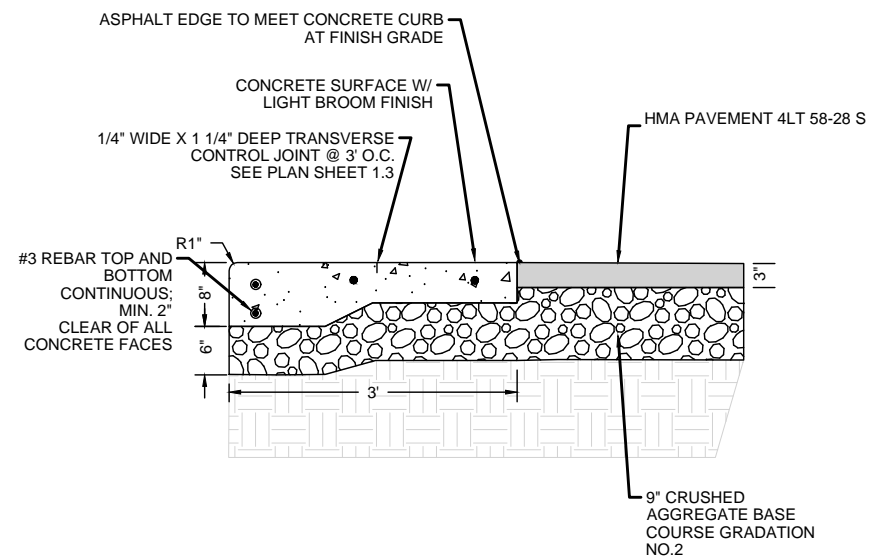
**1** *POURED IN PLACE PLAYGROUND SURFACING*



**2** *PAVEMENT EDGE AT PLAYGROUND SURFACE*



**3** *EQUIPMENT POST AT PLAYGROUND SURFACE*



**4** *CONCRETE BORDER AT PLAYGROUND SURFACE*

PROJECT:

**2023 RENNEBOHM PARK  
 INCLUSIVE PLAYGROUND**

PROJECT ADDRESS:

**RENNEBOHM PARK  
 115 N EAU CLAIRE AVE  
 MADISON, WI 53705**

*Although every effort has been made in preparing these plans and checking them for accuracy, the contractor and subcontractors must check all details and dimensions of their trade and be responsible for the same.*

ITEM	DATE
ADVERTISED TO BID: KK	2023-02-09

PUBLIC WORKS PROJECT #:  
**9279**

SHEET TITLE:  
**POURED IN PLACE  
 SURFACING DETAILS**

SHEET NUMBER:  
**2.1**

NOTE:  
 PRODUCT SHOWN IS MONTAGE II MAJESTIC STEEL PANEL  
 AS MANUFACTURED BY  
 AMERISTAR  
 1555 N. MINGO TULSA, OK 74116  
 WWW.AMERISTARFENCE.COM

City of Madison  
 Department of Public Works  
**PARKS DIVISION**  
 City-County Building, Suite 104  
 210 Martin Luther King, Jr. Blvd.  
 Madison, WI 53703

*play*  
**MADISON  
 PARKS**

PROJECT:

*2023 RENNEBOHM PARK  
 INCLUSIVE PLAYGROUND*

PROJECT ADDRESS:

*RENNEBOHM PARK  
 115 N EAU CLAIRE AVE  
 MADISON, WI 53705*

Although every effort has been made in preparing these plans and checking them for accuracy, the contractor and subcontractors must check all details and dimensions of their trade and be responsible for the same.

ITEM	DATE
ADVERTISED TO BID: KK	2023-02-09

PUBLIC WORKS PROJECT #:  
*9279*

SHEET TITLE:  
*ORNAMENTAL FENCE  
 DETAIL*

SHEET NUMBER:  
*2.2*

